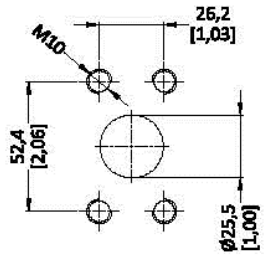
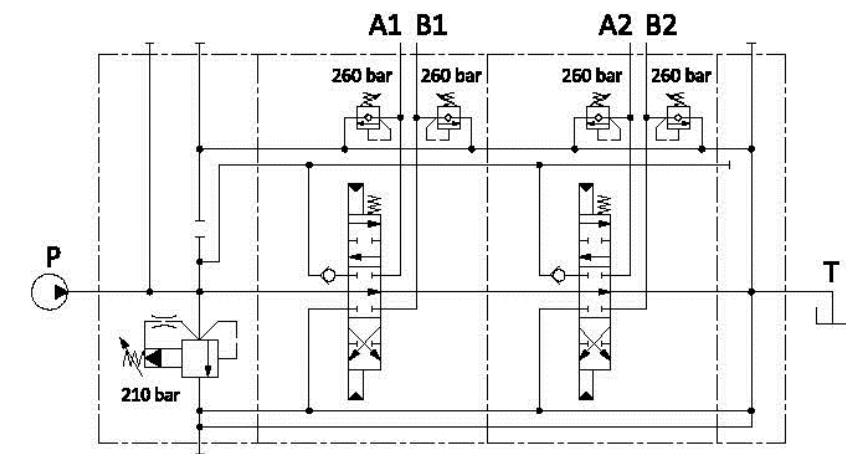
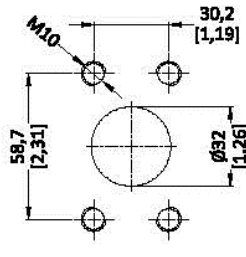


P,A,B
SAE 3000 - 1" (MA)



T
SAE 3000 - 1" 1/4 (MA)



Nominal Flow : 250L

Max. Flow : 380L

Max. Operation Pressure : 350 bar

Max. Back Pressure (T) : 25 bar

Port Size : Inlet P

A and B ports

Outlet T

SAE 3000 - 1" (MA)

SAE 3000 - 1" (MA)

SAE 3000 - 1" 1/4 (MA)

Internal Leakage A(B)->T : 13cm³ / min.

(T Δp100 bar - 1450psi with fluid and valve at 40°C, Oil viscosity 46cST)

P-A-B-C Working Pressure : 320 bar

Fluid Temperature : with NBR seals from -20° to 80°C
with FPM seals from -20° to 100°C

Max. level of contamination : 19/16 - ISO 4406

Weight : -

OEMGC-250.2.0022